




# Fellow Classic

 To secure that the walking-aid will function safely for the user, once per year review of the walking-aid should be done. Therefore is the following interventions recommended.

**Cleaning**

When cleaning the walker it is recommended machine washing, 60 degrees for 10 minutes. When using a pressure washer, do not wash directly to the bearings. In addition to machine washing, regular cleaning with a mild cleanser is recommended. **Note!** Do NOT use thinner, petrol or other solvents.

**Post treatment**

After washing, all connections, tight spaces and drainage holes should be blown dry and sprayed with thin oil. If degreaser is used, should the moving parts be lubricated.

**The Paint**

Control damages to the paint. To prevent corrosion, improve scratches. Touch-up paint can be ordered from Human Care HC AB.

**Pipe frame**

Control weldings and screw attaches. If the corrosion is extensive shall the rollator be replaced.



**Handle**

Must be fixed. Make sure the handle pipes can be pushed down to the chassis. Change the grip if needed.

**Brakes**

Control that both brakes and parkingbrakes are working. Wires should be intact and stapped to the chassis.

**CE-marking**

Make sure that the CE-marking is still there and readable.

**Wing nut**

Control function.

**Reflectors**

Make sure the reflectors are there and visible.

**Hub caps**

Make sure that they are not missing

**Wheels**

Make sure the wheels are not worn-out and are spinning easily without any noise.

**Fork hub och locking washer**

Make sure that the fork hub and locking washer are attached. **Note!** The locking washer must be replaced when disassembling (for rollators with older front fork design).

**Front forks**

Control that attachments and bearings does not fit loosely and spins easily.

**Seat**

Make sure that the seat is kept in place and the nuts are tightened.

**Folding mechanism**

Should be intact and the locking should function.

**Safety catch**

Check that the safety catch falls of its own weight.

**Stability**

Control that all wheels are steadily on the ground and that there are no chassis distortion.

**Test driving**

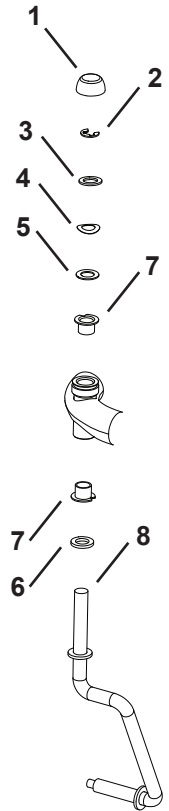
Make a final control by test driving.



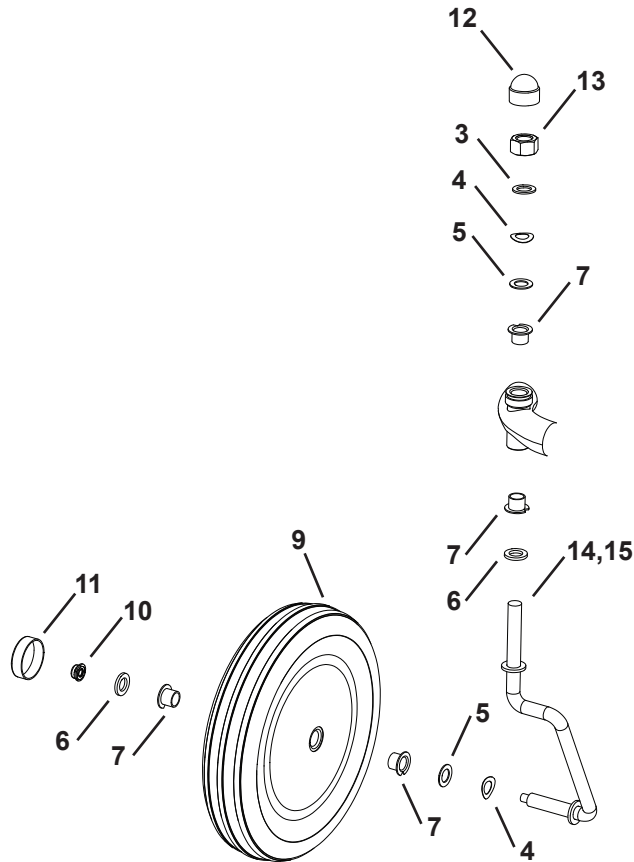


# RECONDITIONING MANUAL

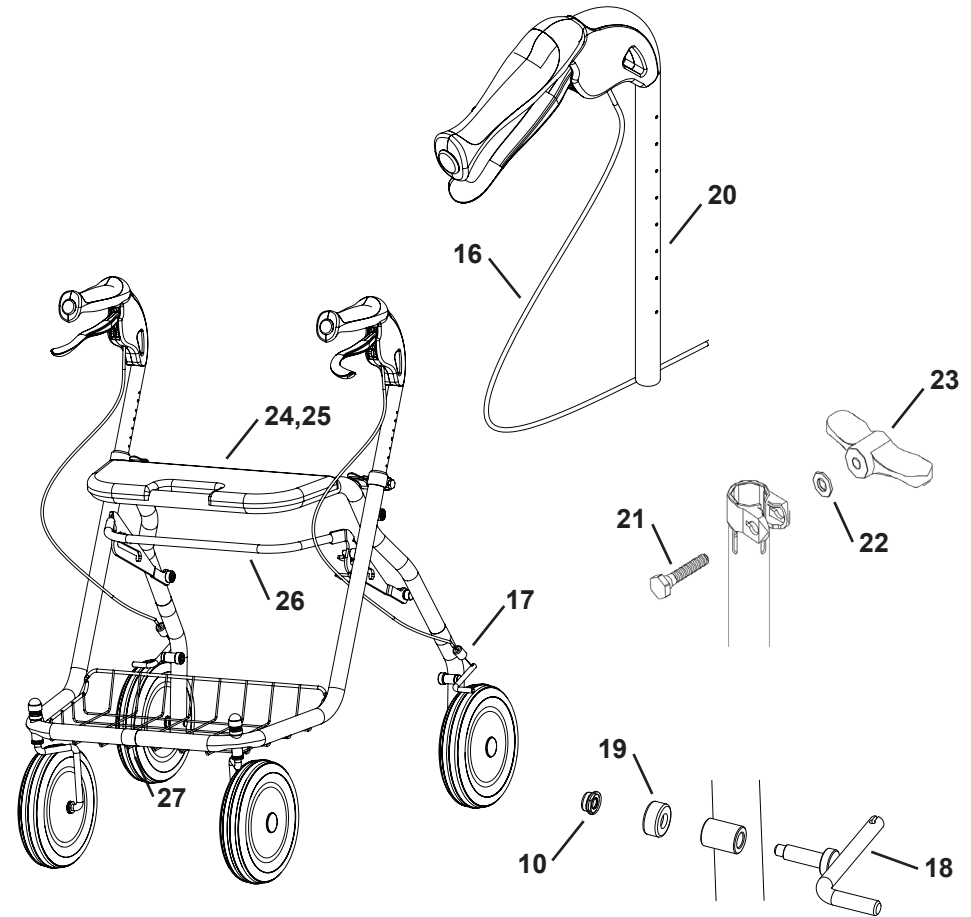
24	Seat	1	93015086	
25	Steel screw	5	93010007	<i>Make sure that the screws are tightened.</i>
26	Locking frame complete	1	200.2100	<i>Complete with safety catch.</i>
27	Reflex	3	00028	
	Touch-up paint		F4	



Until 201209



From 201210



• Årstaängsvägen 21C, SE-117 43 Stockholm, Sweden •  
 • Tel. +46(0)8 - 510 132 00 • Fax +46(0)8 - 655 35 10 •  
 • www.humancaregroup.com •